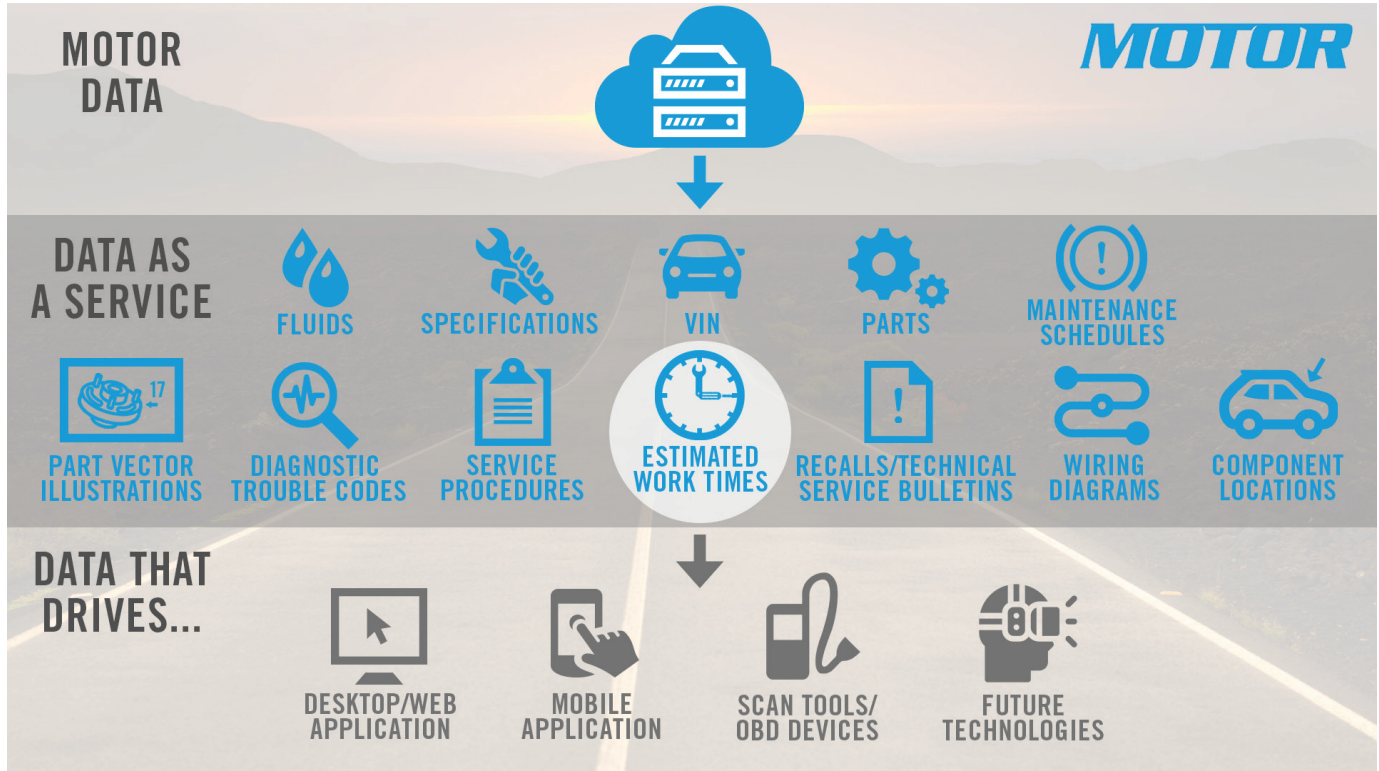


ESTIMATED WORK TIMES

DATA AS A SERVICE - Estimated Work Times provides real-world labor times for the most commonly performed operations, delivered using standardized RESTful web services. For over 50 years, MOTOR has set the industry standard for mechanical labor times. Receive this trusted data via MOTOR Data as a Service (DaaS), a secure web service. License light-duty data or medium- and heavy-duty data, or license both, for convenient access to labor times for Class 1 through 8 vehicles.



WHAT'S INCLUDED

- Expertly-crafted Estimated Work Times and available Original Equipment Manufacturer (OEM) warranty times
- Over 450 common labor operations
- Estimated Work Times for optional operations
- Standard terminology and naming conventions for operations and qualifiers for efficient selection
- Supports 1985+ light-, medium- and heavy-duty vehicles for the U.S. market
- Labor times available for all vehicle classes in a single location
- YMME and ACES vehicle lookup
- VCdb and PCdb industry standards for accurate, seamless links between parts and vehicle information
- Operations mapped to a nine-digit Vehicle Maintenance Reporting Standards (VMRS) (medium- and heavy-duty)
- Formatted as XML, JSON, or BSON via RESTful web services

SUPERIOR SUPPORT



**Online Tech Support
Backed by Subject-
Matter Experts**

FEATURES AND BENEFITS

Estimated Work Times offers many data-driven solutions for repair shops, fleets, dealership/shop management system developers, parts retailers and more.

POPULAR USES

- Tracking repairs at a system, assembly and component level using VMRS coding
- Forecasting cost of vehicle ownership
- Assessing expenses vs. value
- Repair estimating
- Auditing estimates against industry standards
- Evaluating technician efficiency
- Using skill codes to assign appropriate technicians to jobs
- Providing parts buyers with work time estimates associated with the specific parts being purchased
- Developing online estimating tools
- Upsell while-you-are-at-it services

PRE-DEFINED CONNECTIONS (LIGHT-DUTY)

Estimated Work Times have precise relationships to the following MOTOR products:

- Component Locations
- Fluids
- Parts
- Premium Options
- Procedures
- Specifications
- Technical Service Bulletins
- Wiring Diagrams



Real-world Estimated Work Times

- Labor times developed by industry experts
- Write more accurate estimates, increasing profitability
- Accelerate quote process



Add operations

- Produce more accurate estimates when replacing associated parts



ACES PCdb coding

- Associate parts and labor to quickly write accurate estimates
- Link labor to associated parts
- Seamless integration with parts catalogs and inventories to maximize sales



Operations coded to VMRS (medium- and heavy-duty)

- Straightforward tracking of maintenance and repairs
- Industry standard allows for ease of reporting
- Efficiently create estimates by relating labor with parts
- Rapid, precise retrieval of standardized information



Delivery via web services

- Reduced implementation and operating costs when accessing light-, medium- and heavy-duty labor times
- Broadest coverage in the industry, with light-, medium- and heavy-duty data, all maintained in a single, comprehensive source
- Faster time to market
- Automatic content updates for continual reliability
- Technology-agnostic design
- Hosted in a redundant, scalable and secure data center
- Access the data you need, when and where you need it

MOTOR

1301 W. Long Lake Rd. • Suite 300 • Troy, MI 48098 • 248.312.2700 • MOTOR.com